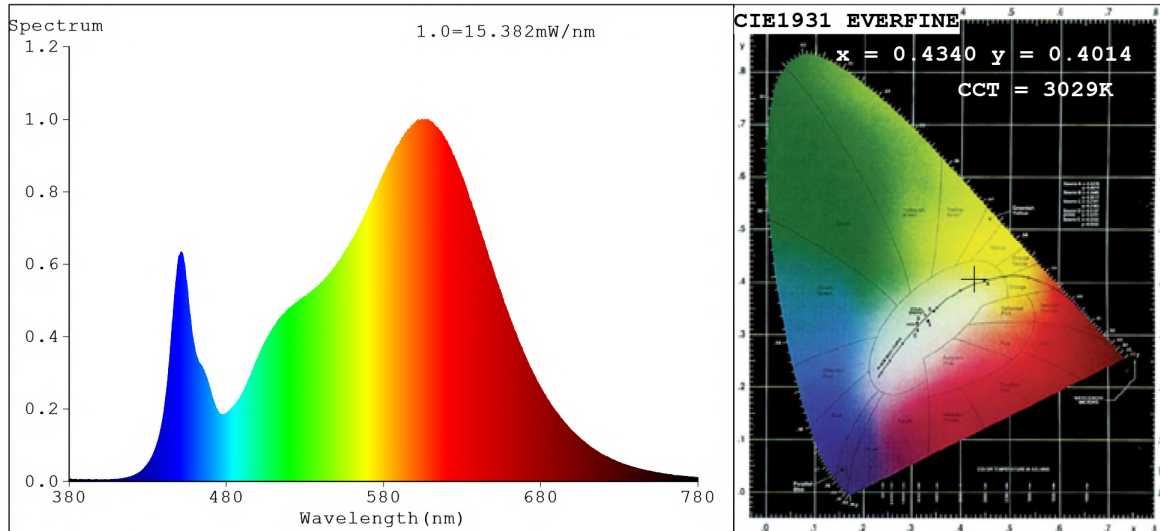


Spectrum Test Report



Color Parameters:

Chromaticity Coordinate: $x=0.4340$ $y=0.4014$ / $u'=0.2498$ $v'=0.5199$
 CCT=3029K (Duv=-0.0007) Dominant WL:Ld =582.9nm Purity=50.8%
 Ratio:R=23.1% G=74.2% B=2.7%; Peak WL:Lp=608.2nm FWHM=129.8nm
 Render Index:Ra=84.4 CRI=79.5 TM30:Rf=83 Rg=96
 R1 =84 R2 =93 R3 =96 R4 =83 R5 =84 R6 =91 R7 =83
 R8 =61 R9 =13 R10=83 R11=84 R12=73 R13=86 R14=99 R15=76

Photo Parameters:

Flux = 748.2 lm Eff. : 142.36 lm/W Fe = 2.273 W Scotopic:1032.9 S/P:1.3806

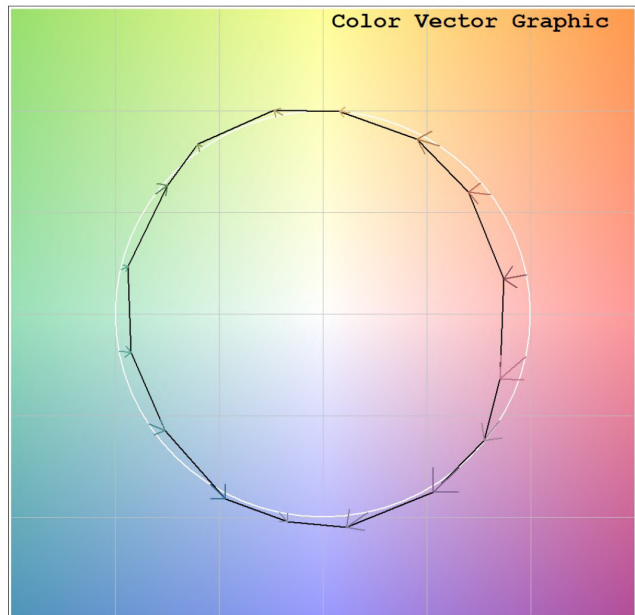
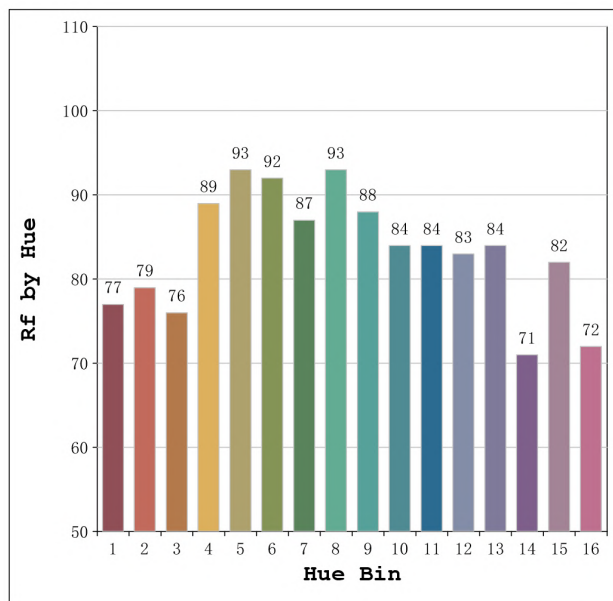
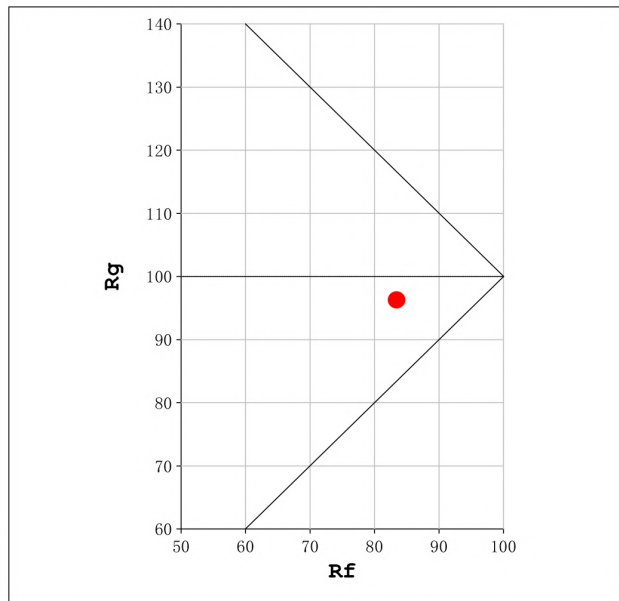
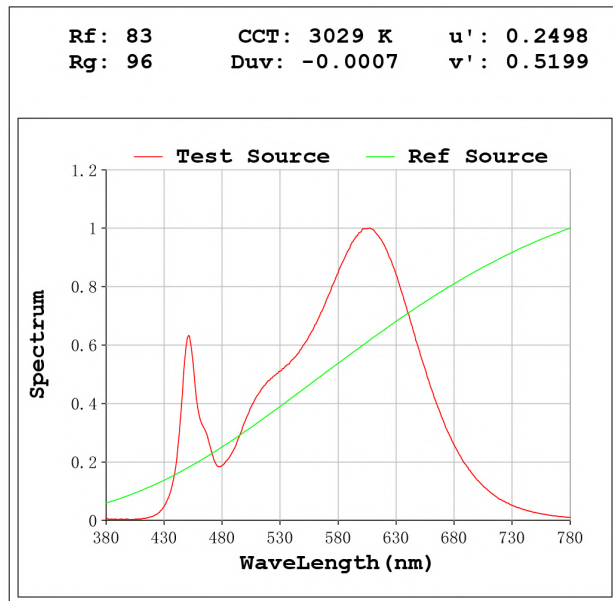
Electrical parameters:

V = 23.998 V I = 0.2190 A P = 5.256 W PF = 1.000

Status: Integral T = 1692 ms Ip = 52483 (80%)

Model:Ecoled Elite 5 3000K
 Tester:Sergio Carneros
 Temperature:27Deg
 Manufacturer:Luz Negra S.L

Number: 31.007
 Date:2024-02-16 12:20:10
 Humidity:40%
 Remarks:100cm de tira flexible

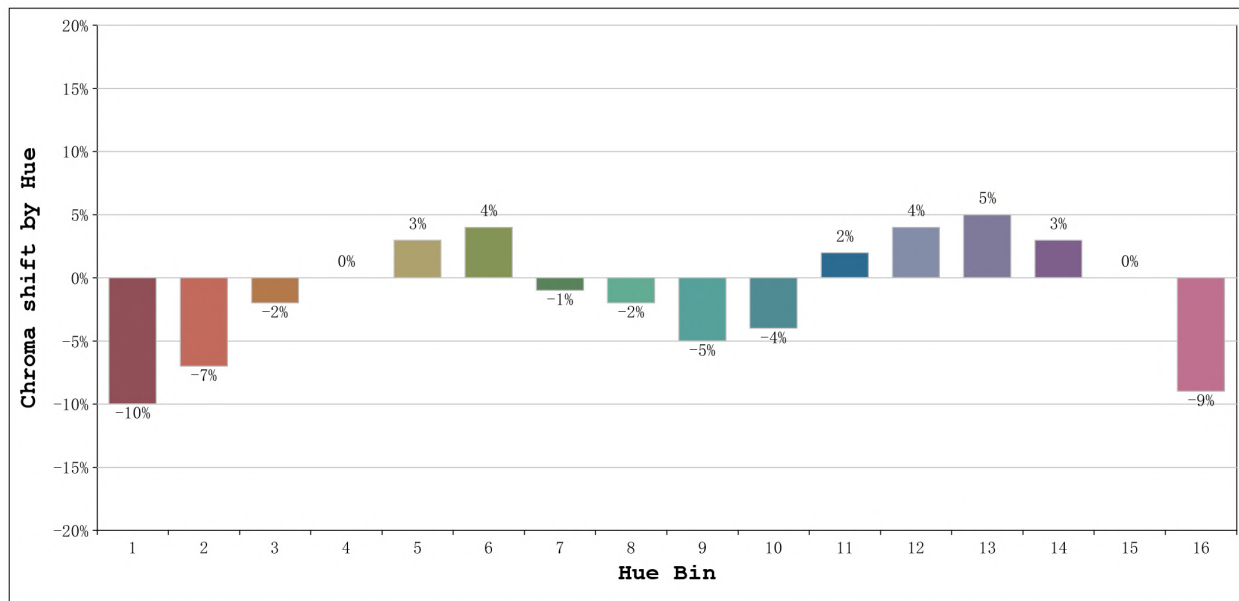


Model:Ecoled Elite 5 3000K
 Tester:Sergio Carneros
 Temperature:27Deg
 Manufacturer:Luz Negra S.L

Number: 31.007
 Date:2024-02-16 12:20:10
 Humidity:40%
 Remarks:100cm de tira flexible

Test LM79 con esfera

3 of 3



			Graphic shift(%)	
Hue Bin	Hue Angle	Rf	Chroma	Hue
1	0.0° - 22.5°	77	-10	0
2	22.5° - 45.0°	79	-7	7
3	45.0° - 67.5°	76	-2	11
4	67.5° - 90.0°	89	0	5
5	90.0° - 112.5°	93	3	3
6	112.5° - 135.0°	92	4	0
7	135.0° - 157.5°	87	-1	-6
8	157.5° - 180.0°	93	-2	-1
9	180.0° - 202.5°	88	-5	2
10	202.5° - 225.0°	84	-4	7
11	225.0° - 247.5°	84	2	10
12	247.5° - 270.0°	83	4	5
13	270.0° - 292.5°	84	5	-10
14	292.5° - 315.0°	71	3	-16
15	315.0° - 337.5°	82	0	-11
16	337.5° - 360.0°	72	-9	-12

Model:Ecoled Elite 5 3000K
Tester:Sergio Carneros
Temperature:27Deg
Manufacturer:Luz Negra S.L

Number: 31.007
Date:2024-02-16 12:20:10
Humidity:40%
Remarks:100cm de tira flexible